



Klever XChange Replacement Blade Heads

Interchangeable, quick-change, snap-in blade heads use with the **Klever XChange** and **XChange PLUS** lines of safety cutters. *Keep the handle, replace the heads!*



KCJ-XH-20

Narrow: Dual-Opening Blade Head (20)

- Two openings for double the usage
- Carbon steel blade
- Ideal for cutting boxes, film, tape, plastic banding, and more!



KCJ-XH-30

Wide: Single-Opening Blade Head (30)

- Wide opening for thicker substrates including double-wall corrugate
- Carbon steel blade
- Ideal for cutting boxes, film, tape, plastic banding, and more!



KCJ-XH-35

Wide: Multipurpose Blade Head (35)

- Integrated tape splitter and scraper for multipurpose use
- Wide opening for thicker substrates including double-wall corrugate
- Carbon steel blade
- Ideal for cutting boxes, film, tape, plastic banding, and more!



KCJ-XH-20TN

Titanium-Coated Narrow, Dual-Opening Blade Head (20)

- Titanium-coated carbon steel blade for increased durability
- Two openings for double the usage
- Ideal for cutting boxes, film, tape, plastic banding, and more!



KCJ-XH-30TN

Titanium-Coated Wide, Single-Opening Blade Head (30)

- Titanium-coated carbon steel blade for increased durability
- Wide opening for thicker substrates including double-wall corrugate
- Ideal for cutting boxes, film, tape, plastic banding, and more!



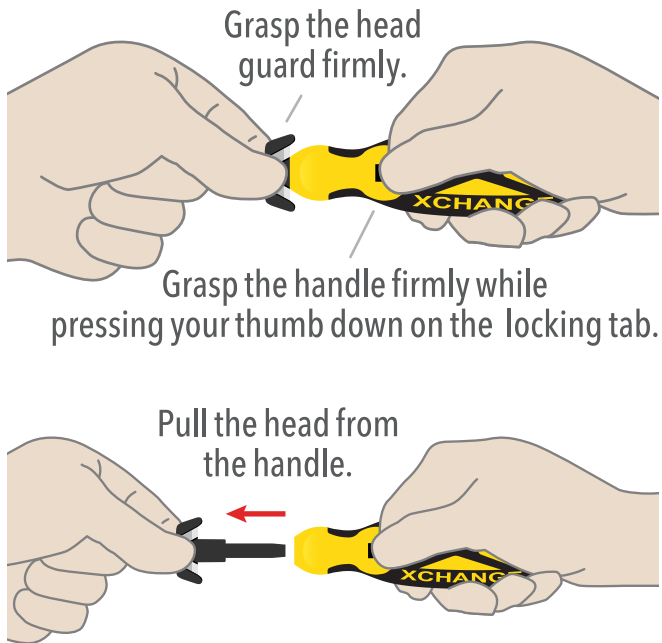
KCJ-XH-40

Kurve, All-Metal Blade Head (40)

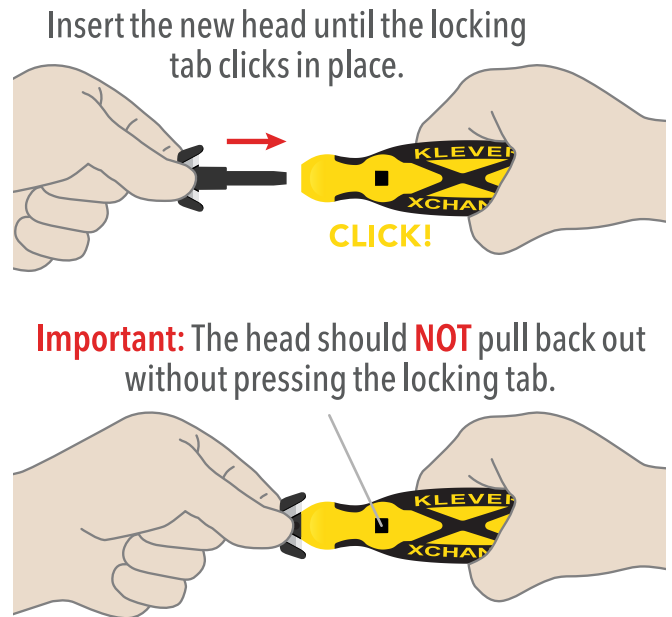
- All-metal, curved carbon steel blade with rounded metal safety tips
- Two openings for double the usage
- Ideal for cutting more abrasive substrates in addition to boxes, film, tape, plastic banding, and more!

Blade Head Replacement Instructions

REMOVING THE HEAD



INSERTING THE HEAD



Product/Packaging Specifications

KCJ-XH-20, KCJ-XH-20TN, KCJ-XH-40

500 pieces per case (bulk bag of 500)

1 case = 10" x 7" x 5" = 4 lbs = 1.81 kg

KCJ-XH-30, KCJ-XH-30TN

500 pieces per case (bulk bag of 500)

1 case = 10" x 7" x 5" = 8 lbs = 3.63 kg

KCJ-XC-35

400 pieces per case (bulk bag of 400)

1 case = 10" x 7" x 5" = 6 lbs = 2.72 kg